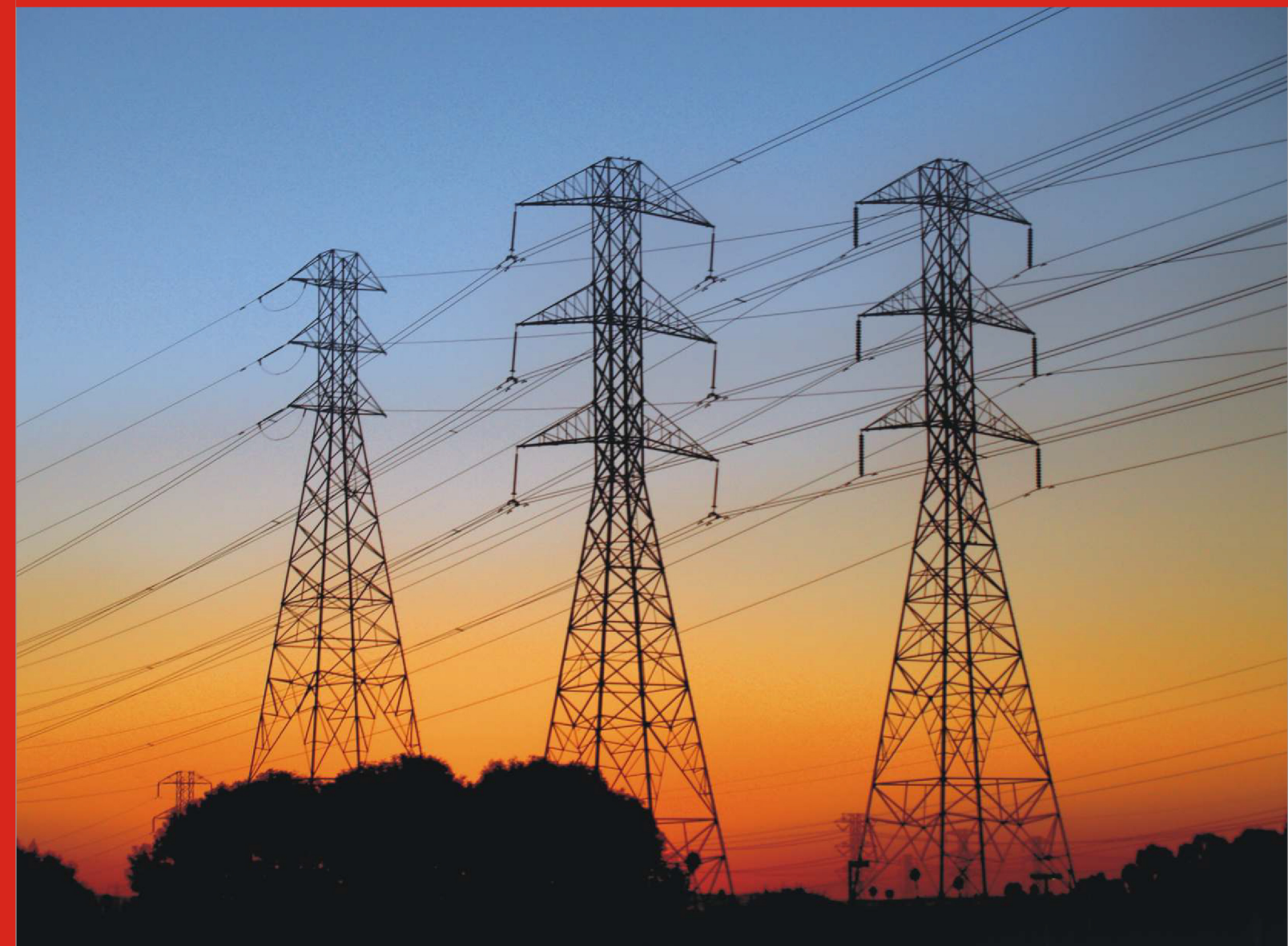


GLOBAL EXPORTS TO 40+ COUNTRIES



Stringing Tools and Plants



WE ARE
Authorised Distributers

POWERCOM SA

STRINGING EQUIPMENT

KuDos®

CSFK CHANGSHA FUKAI ELECTRIC MACHINE & INSTRUMENTSCO.,LTD.
WWW.CSFUKAI.COM

About **KRYFS**

KRYFS Power Components Ltd. is India's largest CRGO transformer core solution company. Commencing production in December 1992, from a humble beginning at Palghar (Maharashtra), with a capacity of 100 MTPA, KRYFS has become India's largest importer and processor of Prime CRGO steel from Japan, USA, Europe, China and Korea. KRYFS has 9 factories located at Palghar, Silvassa, Vadodara and Bhopal on the western coast of India. With 13 automated core cutting lines, 4 slitting machines, and all the latest processing and testing equipment for CRGO Steel, KRYFS is India's most trusted brand by the transformer industry for a transformer core. It is a recognized Star Export House by Ministry of Commerce, Government of India since 2005. Toyota Tsusho Corporation, Japan, a US \$79 billion conglomerate, has acquired a strategic stake of 20% in KRYFS, making it the only independent lamination company in the world, to have the backing of a multinational giant.

Vision

Our vision is to positively contribute to the growth and development of all our stakeholders which includes society, employees, customers, suppliers and shareholders, by operating businesses that are profitable, sustainable and environmentally friendly.

7H VALUES



Honesty



Humility



Humanitarian
Approach



Helpful
Nature



Hard Work



Happy
Outlook



Hamesha Kaizen

TOYOTA TSUSHO

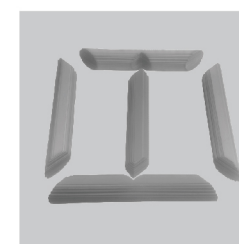
STRATEGIC INVESTOR

Toyota Tsusho Corporation - Japan, subsidiary of automobile Toyota takes stake of 20% in KRYFS



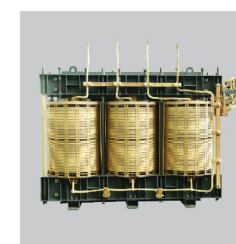
KRYFS

Hamesha Kaizen



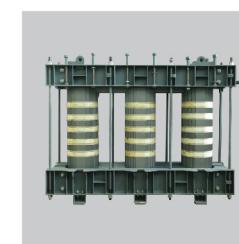
CRGO LAMINATIONS

Upto 1200 kV Class &
Upto 1040 mm Lamination width



**CRGO CORE
COIL ASSEMBLY**

Upto 132 kV Class & Upto 50 MT



**CRGO CORE
ASSEMBLY**

Upto 50 MT



TRANSFORMER

Upto 33 kV Class



TRANSFORMER TANKS

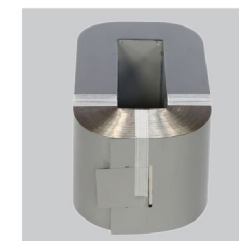
Upto 1200 kV Class



**ENGINEERING,
PROCUREMENT
& CONSTRUCTION**



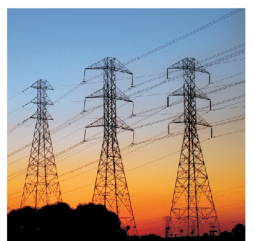
**SOLAR
ROOFTOP**



AMORPHOUS CORE



**MATERIAL
HANDLING**



**STRINGING
TOOLS**

SERVING THE POWER SECTOR SINCE 1992

Single Sheave Pulley

- ☒ We Supply Single Sheave Pulley with steel / Aluminum / Nylon sheave mounted on ball-bearing and galvanized frame, suitable for Steel Wire rope and PP rope.
- ☒ Up to 28 mm groove size
- ☒ Close type and open type available.

| Model | Groove | Ext.dia (mm) | Breaking Load (Ton) | Weight (kg) |
|--------|--------|--------------|---------------------|-------------|
| SSP2.5 | 16 | 90 | 7.5 | 4 |
| SSP 5 | 20 | 108 | 15 | 6.5 |
| SSP 10 | 28 | 160 | 25 | 15 |



Two Sheave Pulley

- ☒ We Supply Single Sheave Pulley with steel/ Aluminum/ Nylon sheave mounted on ball-bearing & galvanized frame
- ☒ Light Weight Two Way Fibre Pulley Block
- ☒ Nylon Type Sheave Mounted On Ball-bearings With A Hinged Cotter Lock Yoke And Forged Steel Hook With Safety Latch.
- ☒ Special Dimension and Aluminum Type On Request, Closed / Open Type Available



| Model | Groove | Ext.dia (mm) | Breaking Load (Ton) | Weight (kg) |
|------------|--------|--------------|---------------------|-------------|
| FDSP/2-2.5 | 20 | 120 | 7.5 | 10 |
| FDSP/2-5 | 20 | 120 | 15 | 13 |

Four Sheave Pulley (Tackle Block)

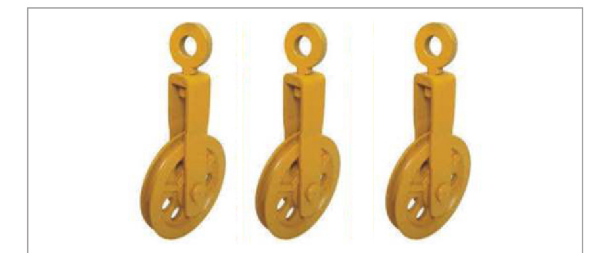
- Multiple Sheave Tackle Blocks
- Made Of Aluminium & Steel

| Model | Number of Sheave | Capacity (Ton) | Breaking Load (Ton) | Weight Per Pair (kg) |
|-------|------------------|----------------|---------------------|----------------------|
| 4M05 | 4 | 5 | 15 | 20 |
| 4M10 | 4 | 10 | 30 | 34 |



Equalizer Pulley

- ☒ Heavy Duty
- ☒ Safe Working Load: 10 Ton Capacity
- ☒ Mild Steel Construction
- ☒ Suitable upto 22 mm Steel Wire Rope
- ☒ Pulleys with required groove on request



Aerial Roller

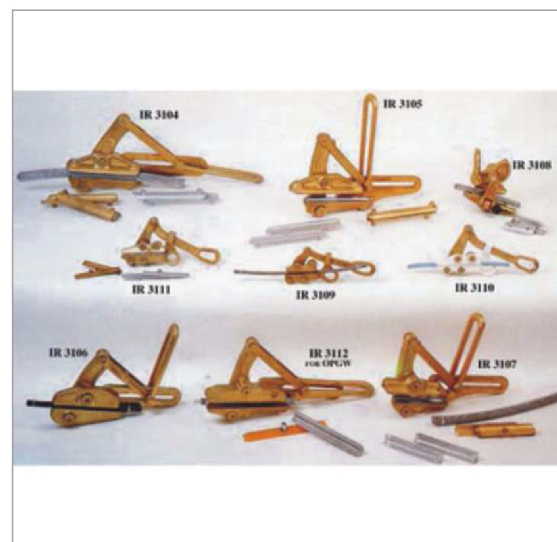
- ☒ Sheaves made of aluminium alloy and groves with neoprene lining.
- ☒ Sheaves mounted on heavy duty ball bearing.
- ☒ Steel welded frame.
- ☒ Factor of Safety 1:2, Conforming to Indian Safety Standard
- ☒ Available : Earthwire Roller, Twin Conductor Roller, Quad Conductor Roller,
- ☒ Hexa Conductor Roller



Automatic Come Along Clamps

- ☒ Suitable For Aluminium, A.C.S.R, Steel Earth Wire, Ant twisting Rope And Copper Conductors.
- ☒ Made Of High Tensile Alloy Steel, Hot Forged, Heat-treated, Precision Machined And Zinc-plated With a Complete Range Of Interchangeable Liners.
- ☒ The Liners Are Available In Aluminium For Aluminium or Aluminium/Steel Conductors, Steel Ant twisting Rope And Steel Earth Wire & Bronze liner for Copper conductors.

| Model | Range (Dia in mm) | Safe Working Load KN | Weight (kg) |
|--------------|-------------------|----------------------|-------------|
| IR 3104S | 10-45 mm | 117 kN | 17 kg |
| IR 3105S | 8-35.2 mm | 88 kN | 13.5 kg |
| IR 3106 | 7.5-18 mm | 50 kN | 7 kg |
| IR 3107 | 6-23 mm | 49 kN | 7 kg |
| IR 3109 | 2.5-15 mm | 19.6 kN | 1.5 kg |
| IR 3111 | 7-16 mm | 21.2 kN | 2.5 kg |
| IR 3112 OPGW | 6-23 mm | 49 kN | 7 kg |



Hydraulic Press Machine (Motorized / Manual)

- ☒ Hydraulic Press suitable for compression of joints on conductors and steel ropes for electric lines (medium and high voltage). Excellent weight/power ratio.
- ☒ Easy to operate on suspension working platforms and steel towers.
- ☒ It is fitted with motorized or hand pump, control valve, pressure gauge and quick release couplings.



| Model | Max Pressing Force | Max Hexagon | Press Weight |
|--------|----------------------------|-------------|--------------|
| IRP55 | 55 Tons (550 kN) working | 44 mm | 19 kg |
| IRP65 | 65 Tons (650 kN) working | 57 mm | 33 kg |
| IRP100 | 100 Tons working Pressure | 57 mm | 32 kg |
| IRP120 | 120 Tons (1200 kN) working | 65 mm | 46 kg |
| IRP200 | 200 Tons (2000 kN) working | 92 mm | 109 kg |

Chain Pulley Blocks

- ☒ Multiple Chain Block for Heavy duty applications,
- ☒ Available with mono rail trolley
- ☒ Propelled by pushing on by hand chain.



Ratchet Hoist

- ☒ Alloy steel Ratchet Lever Block
- ☒ Light weight
- ☒ Strong, easy to use with one hand
- ☒ Saves working time



Torque Wrench

- ☒ Standard Type Click Torque Wrench
- ☒ Ratchet Type Click Torque Wrench



Torque Wrench (Battery Operated)

- ☒ Powerful tightening/loosening torque 480Nm (4,250in.-lbs.)
- ☒ Capacity: Bolt 12 - 22mm (15/32 - 7/8")
- ☒ High Tension Bolt 12 - 16mm (15/32 - 5/8")
- ☒ Drive 12.7mm (1/2") Square Bit Shank
- ☒ Tightening Torque 480Nm (4,250in.-lbs.)
- ☒ Battery Voltage 18V / No Load Speed 1,500/min.



Hydraulic Drum Lifting Jack Hydraulic Cutter

- ☒ Drum lifting jack made of Rectangular Pipe section.
- ☒ Jack is fitted with ball bearing to smooth and easy Rotation.
- ☒ Manually operated Disk break.
- ☒ Maximum drum size 2500 mm.
- ☒ Load carrying capacity 5, 6, 8, 10 Ton



- ☒ Hydraulic cable cutter for copper, Aluminium or Steel cables.
- ☒ The cutter is ergonomically designed with moveable handle.
- ☒ Its having Two-stage hydraulic system which reducing the number of pumping.
- ☒ Cutter can use Up to 45 mm ACSR conductor cables.



Hydraulic Pull Cylinder

- ☒ Hydraulically operated 10 Ton Single acting PULL CYLINDER for replacement of insulators.
- ☒ Capacity -10Ton. Pressure - 700 bar
- ☒ Stroke - Minimum 150 mm & 300mm



Hydraulic Punching Machine

- ☒ Hydraulic Punching Machine of 30 tons power with motorized or hand hydraulic pump.
- ☒ Dies and punches are made of high tensile alloy steel.



Small Tools

BULLDOG GRIP

- ☒ Forged Bull dog Grips
- ☒ Hot Dip Galvanize.
- ☒ Made form Alloy Steel
- ☒ Confirming IS 2361



D- SHACKLE

- ☒ Screw Pin Type
- ☒ Hot Dip Galvanized
- ☒ Made From Alloy Steel Of Grade – 80
- ☒ Conforming IS:6132



TURN BUCKLE

- ☒ No welding, Single piece fully forged.
- ☒ Rolled Square Thread.
- ☒ 30 inch total opening.
- ☒ Available Sizes–3, 5, 10 & 12 Ton



SWIVEL JOINT



| Model | Breaking Load | Wire Dia. mm | Weight (Kg) |
|------------|---------------|--------------|-------------|
| LB-36 OPGW | 7 Ton | 17 mm | 0.6 Kg |
| LB-36 | 12 Ton | 15 mm | 0.8 Kg |
| LB-45 | 25 Ton | 20 mm | 1.2 Kg |
| LB-60 | 50 Ton | 25 mm | 3.4 Kg |

Fixed Joint (Pilot wire connector)

Connect pilot rope or pulling rope and pass over the bull wheel on the puller Minimize the overload on the rope spliced eyes during the passage.



| Model | Breaking Load | Length A | Width B | Opening C | Length D | Width H | Length R | Weight |
|-------|---------------|----------|---------|-----------|----------|---------|----------|---------|
| LO10 | 11 ton | 72.5 mm | 41 mm | 13 mm | 19.5 mm | 14 mm | 15 mm | 0.33 kg |
| LO30 | 22 ton | 100.5 mm | 56 mm | 18 mm | 22 mm | 19 mm | 20 mm | 0.75 kg |
| LO40 | 36 ton | 119.5 mm | 60 mm | 24 mm | 27 mm | 26 mm | 26 mm | 1.03 kg |
| LO50 | 75 ton | 174 mm | 76.5 mm | 28 mm | 42 mm | 30 mm | 32 mm | 3.03 kg |



Pulling Grip / Socks

- ☒ Pulling grip made of Galvanized steel or stainless steel, as per international standard
- ☒ Used for various cable conductor pulling work.

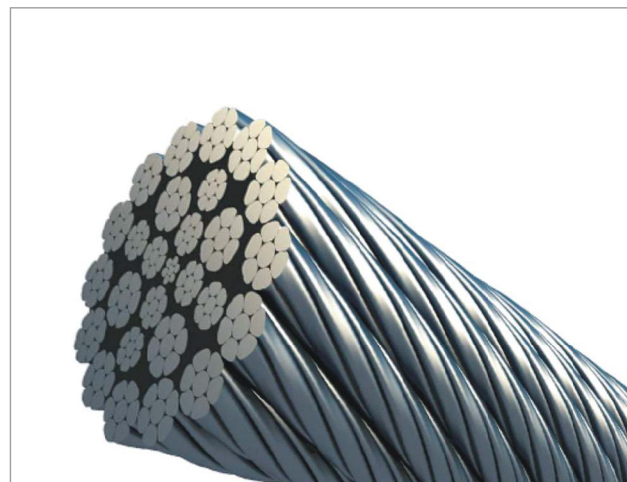


| Code | Conductor Dia (mm) | Length (mm) |
|-------|--------------------|-------------|
| AS 17 | 8-17 | 1400 |
| AS 29 | 17-29 | 1700 |
| AS 38 | 29-38 | 1900 |
| AS 50 | 38-50 | 2270 |

| Code | Conductor Dia (mm) | Length (mm) |
|------|--------------------|-------------|
| AD17 | 8-17 | 2680 |
| AD29 | 17-29 | 3240 |
| AD38 | 29-38 | 3540 |
| AD50 | 38-50 | 4240 |

Steel Wire Rope

- ☒ High Quality flexible 6X19 class steel wire rope.
- ☒ Good Resistance to abrasion
- ☒ Available In FMC & IWRC
- ☒ Un-galvanised & Galvanised Steel wire rope
- ☒ Available as per required Diameter and length.



Steel wire Slings

- ☒ Mechanically ferrule spliced wire rope sling with plain loop at Both ends / One End.
- ☒ High Quality flexible 6X19 class steel wire rope.
- ☒ Good Resistance to abrasion
- ☒ Available In FMC & Steel core
- ☒ Un-galvanised & Galvanised Steel wire rope
- ☒ Available as per required Diameter and length.



Nylon Pilot Rope

- ☒ Anti-twisting braided type polyester pulling rope with internal high tenacity nylon core.
- ☒ Different length and Diameter available.



Power Winch - 3T / 5T / 10T

- ☒ 5 Ton Power Winch with Petrol /Diesel /Electric Driven Engine
- ☒ Maximum Pulling Force/Speed: 5MT/4.5 Mtr/Min
- ☒ Gear Box Collapse load: 12.5 Ton



Traction Machine

- ☒ Self-Moving Traction Machine use to spread OPGW, replace old conductor with Gasoline Dynamo
- ☒ Block Passed diameter range (mm): Ø 9 - Ø 26
- ☒ Maximum Creeping Angle : 31 degree
- ☒ Remote control linear distance 300 – 500 metre
- ☒ Running speed : 17 metre/min
- ☒ Horizontal Pull: 350 N



Recovery Damper

- ☒ Recovery Damper Machine with 70N Damp Break Power
- ☒ Maximum Diameter Range String Block Pass is 16 mm



Derrick Pole

- ☒ Derrick Pole made with C Class Pipe of Jindal/ TATA / SAIL make pipe
- ☒ Suitable for 400 / 765 kV Lines
- ☒ Enamel Painted
- ☒ Equipped with Suitable D-Shackle (Handle)
- ☒ Manufacture as per required Length & Size.



Gin Pole

- ☒ Gin Pole is used to assemble and erect the tower in transmission and distribution line.
- ☒ Manufactured with high strength angle aluminium alloy as main material , steel parts are galvanized.
- ☒ Safety Factor 2:5
- ☒ Can manufactured for required load and strength.



Pulling Lifting Machine

- ☒ The Pulling Machine has a high strength aluminium alloy body, the internal grips axle is galvanized .
- ☒ Meets European / Indian Standard
- ☒ Light Weight
- ☒ Suitable to be used with ropes by 10 meter



Digital Dynamometer

- ☒ Capacity – 10 Ton
- ☒ Division – 5 KG
- ☒ Display – 5 Digit LCD with back light
- ☒ Shackles – 2 Nos.
- ☒ Ultimate Load – 40 Tons
- ☒ Package – Pack with carry case



Angle Cutter / Grinder

- ☒ Powerful 2,000W motor (Maximum Power Output 3,500W)
- ☒ Excellent overload durability
- ☒ Prolonged service life of the carbon brushes.
- ☒ Dust-proof labyrinth construction
- ☒ Durable ball bearing holder thanks to the iron bushing
- ☒ Easy-to-use
- ☒ Large safety lock switch
- ☒ 3-position side handle design
- ☒ Spindle Lock and Double Insulation



Puller & Tensioners

- ☒ Infinitely variable speed and pull force control.
- ☒ The max pull for conductor – stringing operation can preset, automatic overload protection system.
- ☒ Spring applied – hydraulic release brake acts automatically in case of hydraulic failure ensure to safety
- ☒ Water cooled diesel engine.



**Also
Available**

- Heavy Duty Motor Operated Drill Machine
- Heavy Duty Motor Operated Magnetic Drill Machine
- Ratched Drill Machine
- Heavy Duty Angle Cutter
- Telescopic Type Discharge Rod
- Moving Earth Connection For Attending Conductor Works
- Bolted Type PattaClamp
- Kitto Clamp
- Portable Generator
- Light Weight Spacer Placement Trolley
- High Voltage Detector Cable
- High Frequency Resistance Measuring Instrument
- Safety Products (Like Belts, Helmets, Etc)
- Fault Locator With Analyser
- Chain Type Conductor Cutter
- Spanner Sets
- WalkieTalkies
- Mobile Inflated Light Tower
- Tarpaulin
- Tool Box (Spanner, Screw Driver, Hammer, Etc)
- Clearance Measuring Instrument
- Diesel Generator Set
- Tripod
- Aluminium Ladder
- Conductor Trimmer
- Infrared Camera
- Ground Stick Set
- Hand Held Ultra Violet Corona Diagnosing Camera
- Splicer
- Power Meter
- Optical Lesser Torch
- Ranger Light
- Metal Halide Lamp
- Zoom Binoculars
- Tree Pruner / Power Hacksaw For Tree Cutting
- Battery Operated Hoist
- Space Gun
- Earth Cones For Earth Wire Joints
- Portable Rechargeable Torch
- Angle Grinder
- Brush Cutter
- Chain Saw
- Hardware and Fittings

BRANDS WHO TRUST US



Our Active Dealers / Distributors / Agents Across India

